



# TORQUE MULTIPLICADORES



JULHO 2010

## MULTIPLICADORES DA SERIE HT-3

### HT3 Torque Multiplier

- 5:1 torque multiplication, accuracy guaranteed better than  $\pm 4\%$ .
- Supplied with two reaction bar styles for maximum versatility.
- Robust construction means minimal maintenance and long life.
- Supplied in a carrying case, the Highwayman is ideal for inclusion in the heavy vehicle tool kit.
- 1300 N.m version has a spare 3/4" output square included in the kit.
- Multiplier head only (no reaction bars or plastic box) also available. 1300 N.m version, part code 17218. 2700 N.m version, part code 17219.



Model	Part Code	Range		Ratio	Input Square/Hexagon	Output Square	A	B	C	D	Tool Weight	Reaction Weight	Part Code	€
		N.m	lbf.ft											
HT3 1300 N.m. Versão Kit	17220	1300	960	5:1	1/2" Femea / 32mm A/F Macho	3/4"	108	126	210	180	3.8	1.3	1N17220	
HT3 2700 N.m. Versão Kit	17221	2700	2000	5:1	3/4" Femea / 36mm A/F Macho	1"	108	128	210	186	3.8	1.3	1N17221	

REF

QUADRA s/ANILHA DE FREIO	1"	1N17184
QUADRA C/ANILHA DE FREIO	3/4"	1N17185
QUADRA S/ANILHA DE FREIO	3/4"	1N17676
QUADRA S/ANILHA DE FREIO	1"	1N16549

## MULTIPLICADORES DAS SERIES HT-52 e HT-72

### Handtorque™ HT-52 and HT-72 Series

- Compact dimensions allow excellent access and easy safe handling.
- Guaranteed accuracy of better than  $\pm 4\%$ .
- Anti Wind-Up Ratchet available, for easier and safer operation.
- HT-72 features a light weight aluminium reaction arm.
- A variety of alternative reaction styles are available for maximum versatility.
- Electronic torque transducers can be fitted to the HT-72 for precise torque monitoring. See page 81.
- Available in a variety of ratios and output square drive sizes.

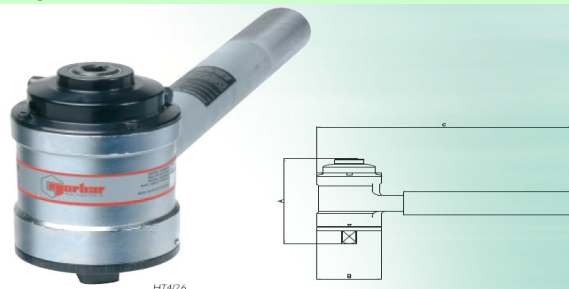


Model	Part No.	Range		Ratio	Input Square	Output Square	A	B	C	D	Tool Weight	Reaction Weight	Part Code	€
		N.m	lbf.ft											
HT-52/22	18051	1000	740	22:1	3/8"	3/8"	52	139	131	175	1.4	0.85	1N18051	
HT-52/22	18052	1000	740	22:1	1/2"	1/2"	52	139	131	175	1.4	0.85	1N18052	
HT-52/22 Fitted with AWUR	18083	1000	740	22:1	3/8"	3/8"	52	150.1	131	186.3	1.6	0.85	1N18083	
HT-52/22 Fitted with AWUR	18084	1000	740	22:1	1/2"	1/2"	52	150.1	131	186.3	1.6	0.85	1N18084	
HT-72/5	18014	1000	740	5:1	1/2"	3/8"	72	144	165	188	2.4	0.66	1N18014	
HT-72/5	18015	1500	1100	5:1	1/2"	1"	72	144	165	188	2.4	0.66	1N18015	
HT-72/5	18017	2000	1450	5:1	3/8"	1"	72	144	165	188	2.4	0.66	1N18017	
HT-72/25	18018	1000	740	25:1	1/2"	3/8"	72	165	165	188	2.7	0.66	1N18018	
HT-72/25	18019	2000	1450	25:1	1/2"	1"	72	165	165	188	2.7	0.66	1N18019	
HT-72/25 Fitted with AWUR	18081	1000	740	25:1	1/2"	3/8"	72	174	165	218	3.0	0.66	1N18081	
HT-72/25 Fitted with AWUR	18082	2000	1450	25:1	1/2"	1"	72	174	165	218	3.0	0.66	1N18082	

## MULTIPLICADORES DA SERIE HT-4

### HT4 Torque Multiplier

- True 15.5:1 or 26:1 torque multiplication, accuracy guaranteed better than  $\pm 4\%$ .
- High ratios allow the use of a small torque wrench.
- Robust construction means minimal maintenance and long life.
- Supplied in carrying case with replacement square drive.
- Anti Wind-Up Ratchet (Anti Backlash) fitted to allow safer and more practical operation.
- Angle protractor for easy torque and angle tightening.



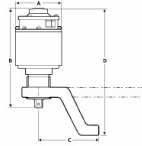
Model	Part Code	Range		Ratio	Input Square	Output Square	A	B	C	Tool Weight	Reaction Weight	Part Code	€
		N.m	lbf.ft										
HT4/15.5	17022	3000	2200	15.5:1	3/8"	1"	108	156	450	6.1	1.9	1N17021	
HT4/26	17021	4500	3300	26:1	3/8"	1"	108	173	450	7.0	1.9	1N17022	

MULTIPLICADORES DAS SERIES HT-30 : HT-45 : HT-60

**Handtorque™ Small Diameter Series**

Handtorque models HT30, 45 and 60 have all the features of the Standard Series, but have a higher torque output for a given gearbox diameter.

- Reduced diameter allows better access, particularly on pipe flanges.
- Reaction taken from high strength spline.
- Reaction foot can slide on the spline to allow for sockets of various lengths (except HT45).
- Anti Wind-Up Ratchet available on all models (except 5:1 ratios), allowing safer and more practical operation.
- HT45 has integral angle protractor for easy torque and angle tightening.



Alternative 300mm long, 40mm reaction plate may be modified by customer to suit their application. HT30 Part No. 18045 HT45 and HT60 Part No. 18047



Model	Part No.	Range		Ratio	Input Square	Output Square	A	B	C	D min	D max	Tool Weight	Reaction Weight
		N.m	lbf.ft										
30/5	18003	3000	2200	5:1	¾	1	108	190.4	141	223	251.4	5.0	2
30/1.5 Fitted with AWUR	18004	3000	2200	15:1	¾	1	108	224	141	256	285	7.0	2
30/25 Fitted with AWUR	18006	3000	2200	25:1	¾	1	108	224	141	256	285	7.0	2
45/26 Fitted with AWUR	18037	4500	3300	26:1	¾	1	108*	224	175	-	318	8.7	4
60/25 Fitted with AWUR	18008	6000	4400	25:1	¾	1½	119	271	154	320	351	10.6	4
60/125 Fitted with AWUR	18012	6000	4400	125:1	¾	1½	119	301	172	350	381	12.1	4

Part Code €

- 1N18003
- 1N18004
- 1N18006
- 1N18008
- 1N18012
- 1N18037

MULTIPLICADORES DE TORQUE SERIE STANDARD ATÉ 3400Nm - precisão ± 4%  
(transdutores electronicos de torque podem ser aplicados para monitorar com precisão)

**Handtorque™ Standard Series**

Models to 3400 N.m

- True torque multiplication guaranteed better than ±4%.
- High ratios allow the use of a small torque wrench, multipliers can be used where access is limited.
- Anti Wind-Up Ratchet available on models of 25:1 ratio.
- A variety of reaction styles are available for maximum versatility.
- Electronic torque transducers can be fitted for precise torque monitoring. See page 75.



Model	Part Code	Range		Ratio	Input Square	Output Square	A	B	C min	C max	Tool Weight	Reaction Weight
		N.m	lbf.ft									
1	16010	1700	1250	5:1	¾	¾	108	106	83	217	3	2.2
2/5	16012	1700	1250	5:1	¾	1	108	126	83	217	3	2.2
2/25 Fitted with AWUR	16089	1700	1250	25:1	¾	1	108	156	83	217	5.6	2.2
5/5	16014	3400	2500	5:1	¾	1	119	143	86	264	4.7	2.5
5/25 Fitted with AWUR	16090	3400	2500	25:1	¾	1	119	187	86	264	7.5	2.5
6/5	16016	3400	2500	5:1	¾	1½	119	149	86	264	4.7	2.5
6/25 Fitted with AWUR	16092	3400	2500	25:1	¾	1½	119	195	86	264	7.5	2.5

Part Code €

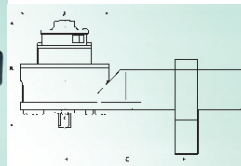
- 1N16010
- 1N16012
- 1N16014
- 1N16016
- 1N16089
- 1N16090
- 1N16092

MULTIPLICADORES DE TORQUE SERIE STANDARD ATÉ 47500Nm - precisão ± 4%  
(transdutores electronicos de torque podem ser aplicados para monitorar com precisão)

**Handtorque™ Standard Series**

Models to 47500 N.m

- True torque multiplication guaranteed better than ±4%.
- High ratios allow the use of a small torque wrench, multipliers can be used where access is limited.
- Anti Wind-Up Ratchet available on models of 25:1 ratio and above.
- Electronic torque transducers can be fitted for precise torque monitoring. See page 75.



Model	Part Code	Range		Ratio	Input Square	Output Square	A	B	C min	C max	Tool Weight	Reaction Weight
		N.m	lbf.ft									
7/5	16067	6000	4500	5:1	¾	1½	144	165	146	333	8.1	6.3
7/25 Fitted with AWUR	16065	6000	4500	25:1	¾	1½	144	225.5	146	333	10.7	6.3
7/25 Sm. Dia Fitted with AWUR	16095	6000	4500	25:1	¾	1½	130	211	163.4	337	10.6	4.9
7/125 Fitted with AWUR	16068	6000	4500	125:1	¾	1½	144	239.5	146	333	12.2	6.3
7/125 Sm. Dia Fitted with AWUR	16096	6000	4500	125:1	¾	1½	130	238	163.4	337	12.1	4.9
9/25 Fitted with AWUR	16070	9500	7000	25:1	¾	1½	184	209	171	351	17.4	8.3
9/125 Fitted with AWUR	16071	9500	7000	125:1	¾	1½	184	234	171	351	18.9	8.3
11/25 Fitted with AWUR	16048	20000	14700	25:1	¾	2½	212	329.4	-	500	30.6	13.3
11/125 Fitted with AWUR	16049	20000	14700	125:1	¾	2½	212	307	-	500	32.1	13.3
13/125 Fitted with AWUR	16053	47500	35000	125:1	¾	2½	315	366	-	-	95.2	6.9

Part Code €

- 1N16049
- 1N16053
- 1N16065
- 1N16067
- 1N16068
- 1N16070
- 1N16071
- 1N16095
- 1N16096