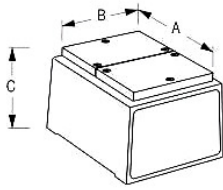




DESMAGNETIZADORES

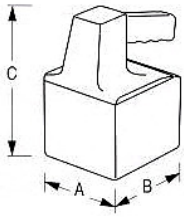
MODELOS DE SOBREMESA



| CÓDIGO | 70.00.001 | 70.00.002 |
|----------------|-----------|-----------|
| Dimensiones: A | 160 mm | 220 mm |
| B | 120 mm | 170 mm |
| C | 115 mm | 122 mm |
| Intensidad | 1,3 A | 3 A |
| Potencia | 286 V.A. | 660 V.A. |
| Peso | 5,5 Kg | 12 Kg |



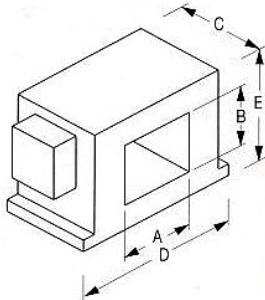
MODELO PORTATIL



| CÓDIGO | 70.01.001 |
|----------------|------------|
| Dimensiones: A | 120 mm |
| B | 105 mm |
| C | 180 mm |
| Intensidad | 5,8 A |
| Potencia | 1.330 V.A. |
| Peso | 5,5 Kg |



MODELOS DE TÚNEL



| CÓDIGO | 70.13.012 | 70.13.017 |
|----------------|-----------|------------|
| Dimensiones: A | 150 mm | 200 mm |
| B | 60 mm | 100 mm |
| C | 200 mm | 200 mm |
| D | 250 mm | 330 mm |
| E | 160 mm | 230 mm |
| Intensidad | 3,8 A | 10,1 A |
| Potencia | 870 V.A. | 2.320 V.A. |
| Peso | 27 Kg | 45 Kg |

